

Model 7500/7520 Deep-Reach Trucks Layout

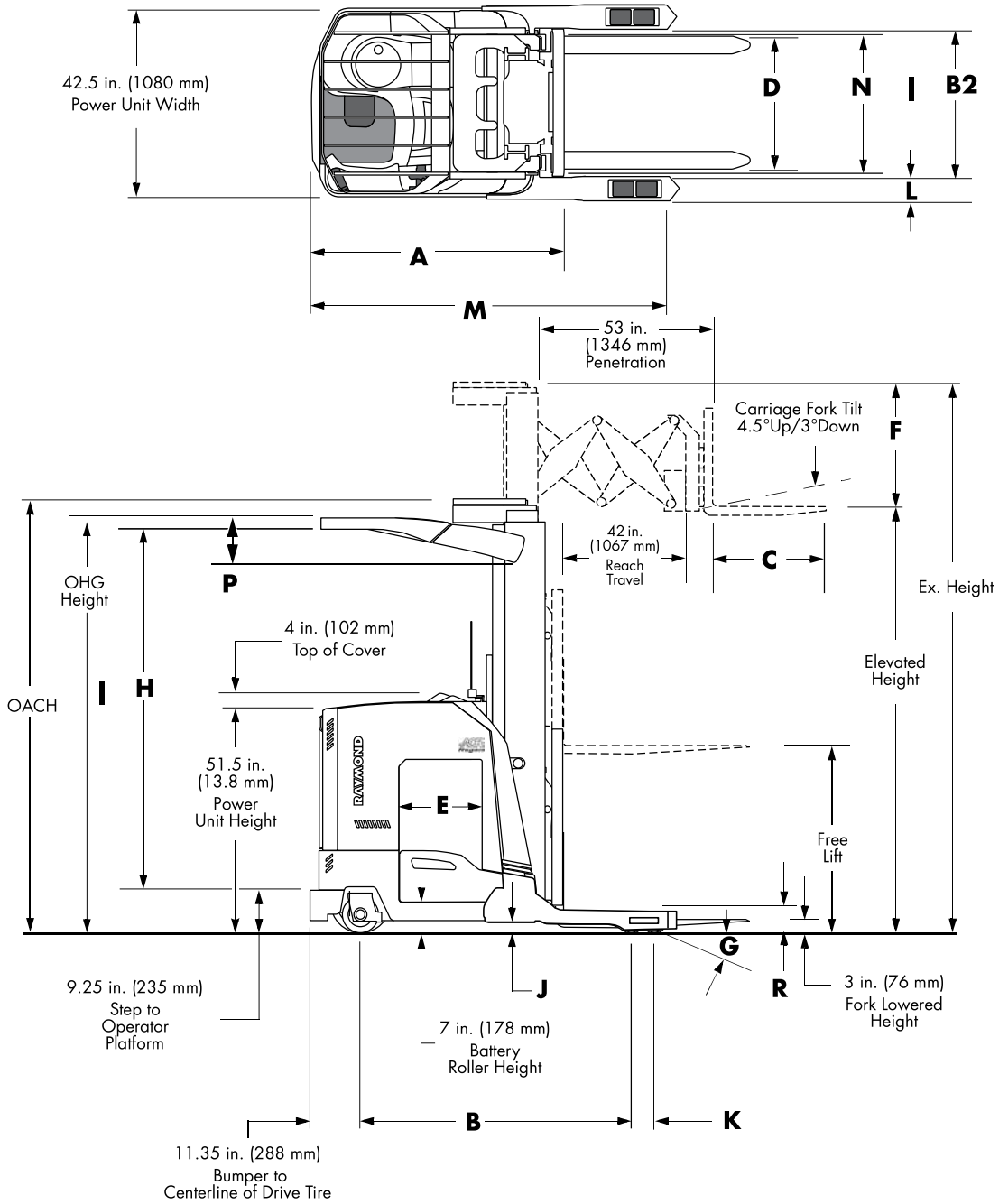


Figure 2. Model 7500/7520 Deep-Reach Trucks Layout

Model 7500/7520 Deep-Reach Trucks Dimensional Data

Table 12. Model 7500/7520 Deep-Reach Trucks Dimensional Data

Model		7500-DR32TT w/ Sideshift (El. Ht. to 372 in.) [5]	7520-DR32TT w/ Sideshift (El. Ht. to 444 in.) [4][6]
A	Truck Head Length w/ Sideshift	in. 62.0 [3] (mm) (1575)	66.8 [4] (1697)
B	Truck Wheelbase	in. 61.6 [3] (mm) (1565)	65.1 [4] (1654)
B2	Baseleg Opening (BLO)	in. [8] (mm)	[8]
C	Forks, ITA Type (Std.) (L x W x T)	in. 42 x 4 x 1.5 (mm) (1067 x 102 x 38)	42 x 4 x 1.5 (1067 x 102 x 38)
C	Forks, Lengths (Opt.)	in. 30, 36, 48 (mm) (762, 914, 1219)	30, 36, 48 (762, 914, 1219)
D	Fork Adjustment	in. 15 – 30 (mm) (381 – 762)	15 – 30 (381 – 762)
E	Battery Compartment Max. Usable Width [2]	in. 16.12 [3] (mm) (409)	18.12 [4] (460)
F	Fixed Carriage Height (Without Load Backrest)	in. 38 (mm) (965)	38 (965)
G	Grade Clearance	% 13	10
H	Operator Compartment Height	in. OHG height – 11.25 (286) (mm)	OHG height – 11.25 (286)
J	Truck Underclearance	in. 2 (mm) (51)	2 (51)
K	CL to CL Load Wheel	in. 5.25 (mm) (133)	5.25 (133)
L	Baseleg Width [7]	in. 5.25 (mm) (133)	5.25 (133)

Notes:

- [1] Add 3.0 in. (76 mm) at OHG side plates.
- [2] Additional clearance available, 0.25 in. (6.4 mm) with minor alteration.
- [3] Add 2 in. (51 mm) for 18.12 in. (460 mm) B.C. and 5 in. (127 mm) for 21.12 in. (536 mm) B.C.
- [4] Add 3 in. (76 mm) for 21.12 in. (536 mm) B.C.
- [5] For lift heights from 331 in. (8407 mm) to 372 in. (9449 mm): Requires 18.12 in. (460 mm) B.C. or 21.12 in. (536 mm) B.C. AC/AC configuration.
- [6] For lift heights greater than 400 in. (10160 mm): Requires 21.12 in. (536 mm) B.C.
- [7] The baseleg overall width is the inside dimension (BLO) plus 10.5 in. (266.7 mm). You may need to reduce the inside dimension 1 in. (25.4 mm) to accommodate existing applications.
- [8] Available baseleg openings (BLO) are 33, 34, 35, 36, 37, 38, 39, 40, 41, 42, 43, 44, 49, 50, 51, and 52 inches. For Elevated Heights at 331 in. (8407 mm) or greater, 37 in (940 mm) is minimum BLO.

Table 12. Model 7500/7520 Deep-Reach Trucks Dimensional Data

Model		7500-DR32TT w/ Sideshift (El. Ht. to 372 in.) [5]	7520-DR32TT w/ Sideshift (El. Ht. to 444 in.) [4][6]
M	Truck Length	in. (mm) 83.3 [3] (2116)	86.8 [4] (2205)
N	Truck Mast OAW [1]	in. (mm) 31 (787)	35.5 (902)
P	Overhead Guard Thickness	in. (mm) 10.02 (254)	13.18 (335)
Q	Load Backrest Height	in. (mm) 36 (914)	36 (914)
R	Baseleg Height	in. (mm) 5 (127)	5 (127)

Notes:

- [1] Add 3.0 in. (76 mm) at OHG side plates.
- [2] Additional clearance available, 0.25 in. (6.4 mm) with minor alteration.
- [3] Add 2 in. (51 mm) for 18.12 in. (460 mm) B.C. and 5 in. (127 mm) for 21.12 in. (536 mm) B.C.
- [4] Add 3 in. (76 mm) for 21.12 in. (536 mm) B.C.
- [5] For lift heights from 331 in. (8407 mm) to 372 in. (9449 mm): Requires 18.12 in. (460 mm) B.C. or 21.12 in. (536 mm) B.C. AC/AC configuration.
- [6] For lift heights greater than 400 in. (10160 mm): Requires 21.12 in. (536 mm) B.C.
- [7] The baseleg overall width is the inside dimension (BLO) plus 10.5 in. (266.7 mm). You may need to reduce the inside dimension 1 in. (25.4 mm) to accommodate existing applications.
- [8] Available baseleg openings (BLO) are 33, 34, 35, 36, 37, 38, 39, 40, 41, 42, 43, 44, 49, 50, 51, and 52 inches. For Elevated Heights at 331 in. (8407 mm) or greater, 37 in (940 mm) is minimum BLO.